

ECO Stitcher arm 1100

<http://eco-labo.info>



ECO Stitcher arm 1100
※image

Three advantages of non-use of wire

POINT
1

Non-use of wire in stitching allows for corrugated boxes free from scratch and rust.

POINT
2

No apparent adhesion. Cardboards are stitched together completely.

POINT
3

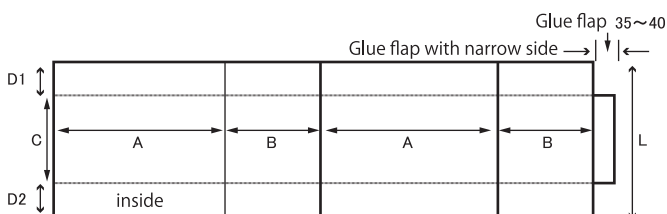
Rayon fiber yarn eliminates the need of waste separation into yarn and boxes.

ECO  **Stitcher**[®]
arm 1100 エコ・ステッチャー

◆ size mm

A	MAX	1220
	MIN	160
B	MAX	900
	MIN	160
C+D1	MAX	1100

The figures are approximate. Please contact us for detailed dimensions. It is possible to suture the boxes called A-type & semi-A-type by one-side-flap out of the machine. Please note the suture direction and printing direction.



◆ We can supply the laser marker to check of a suture start position optionally

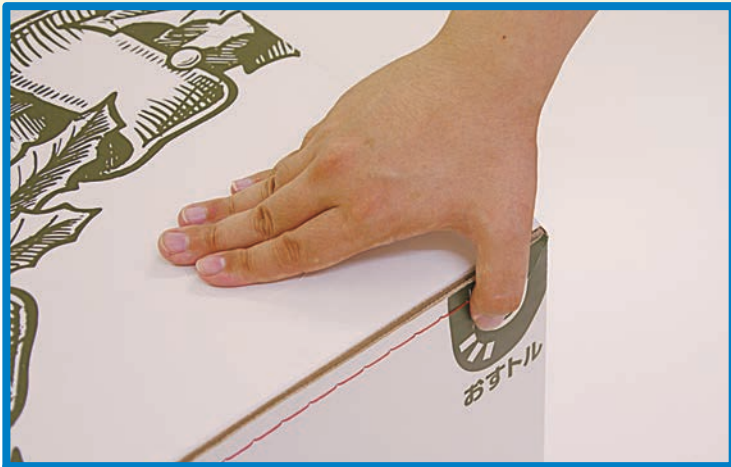
◆ Machine details information

Sewing method	Straight 2-lines, Single chain stitch
Setting system	Set the sheet by manual.
Discharge system	Discharge by automatic.
The width of the seam	12mm
Sewing pitch	The middle pitch is 15 mm The last pitch can be selected in three (5mm,7mm,10mm)
Sweing speed	6 m/M
Cutting system	Automatic thread cutting device
Machine dimensions	Depth 1819 mm × Height 1648 mm × Wide 1402 mm (Including auxiliary guide) (870 mm only machine)
Machine weight and power	About 400kg, Single-phase 110V / 220v3 phase 110V, 220V (Election, prior talk necessary)
Required capacity of air compressor	Minimum 1.5kw (2ps) Dry filter or dryer needs

Eco-Stecher is the machine to create a safe and secure

Eco-stitcher packages and products to people who can open the box easily without using a cutter knife, etc, by simply pulling the thread out.

Adoption of example Push&take system that debuted in 2014



Eco-stitcher has various prizes already.



Five good points

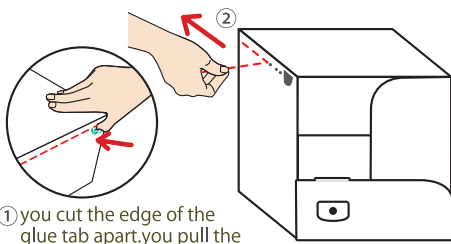
- 1 Do not need cutter knife when opening.
- 2 You can open up the box completely, and easy to pick it up.
- 3 Easy to disposal because the box becomes easily like sheet by pulling up a thread.
- 4 The box becomes the safekeeping case after opening.
- 5 Because we use a staple fiber thread made by pulp, the thread can reduce carbon dioxide.

Surusuruparatto flower

① Push&take system to open.

② Do not need cutter knife when opening.

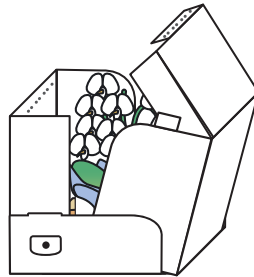
③ It is available as a display stand.



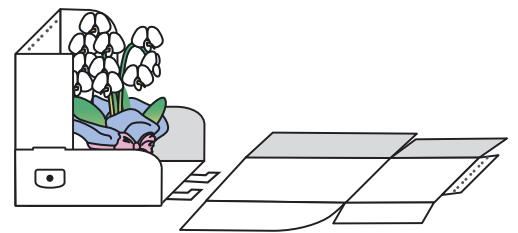
① you cut the edge of the glue tab apart, you pull the thread off.

It is so easy to open for even old person.

easy to open



You can take thread out easily until the end. It is safe because we do not use a cutter knife.



The box itself should be a lovely package to make a precious present even more so.

Inquiries about Eco Stitcher to ECOS CO.,LTD.

TEL : +81-52-665-6721 Mail : info@eco-labo.info

For information of Eco Stitcher

<http://eco-stitcher.info>

For information of packages stitched by Eco Stitcher

<http://eco-labo.info>



The Eco's Co., Ltd. caught the authorization for partnership business as "production, sale business of the suture machine for exclusive use of the corrugated cardboard using an exclusive thread" on February 4, 2013.

Morimoto Mfg. Co., Ltd is in charge of sewing machine.

Kojima ironworks Co., Ltd is in charge of the design and development of corrugated cardboard transport system. and work evaluation.

Check ! Eco Stitcher Lab

