

FOR one piece and narrow box style.

Eco-stitcher is the machine to create a safe and secure packages products to people who can open the box easily without using a cutter knife, etc., by simply pulling the thread out.

Eco-stitcher Thru Short

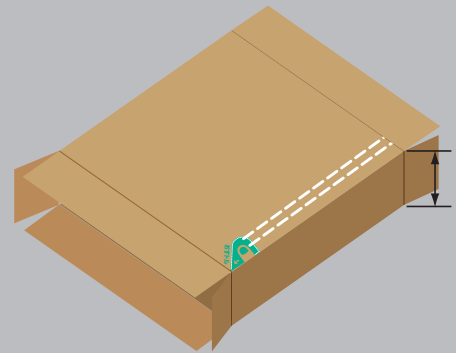
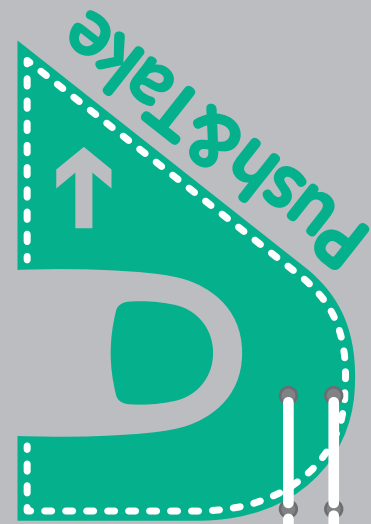
3-less points

- ① NO Rust&Scratch.
- ② NO Para-Adhesion.
- ③ NO Classification processing.
Because the thread is made by pulp.



5 Good-points

- ① Accommodates corrugated boxes 100 mm wide or more.
- ② Stitched cardboard boxes can be unpacked just by pulling out the yarn without use of tools.
- ③ Achieves higher compression strength of stitched boxes as compared to that of wire-seamed boxes.
- ④ Contributes to reducing CO2 emissions. According to the estimation in life cycle assessment, CO2 emissions are reduced by 1.16 g per one shot of metal wire on the corrugated box.
- ⑤ It is easy to accommodate a variety of sizes so that the manual feed.



Thin cardboard box also can be sutured than 100mm(inside size)

This machine accept height of cardboard box is as long as your cardboard.

Acceptance case format.

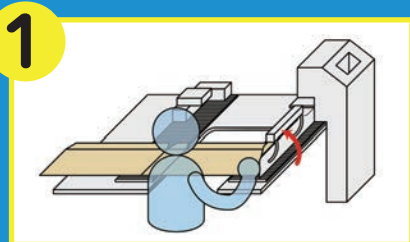
Semi A style.
The suture distance manage with a sensor.

Tube style of cardboard
The suture distance manage with a sensor.

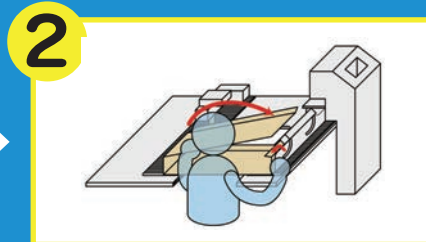
Regular A-style
The suture distance manage by number of sutured

For three foemat depends on specification program we discused.

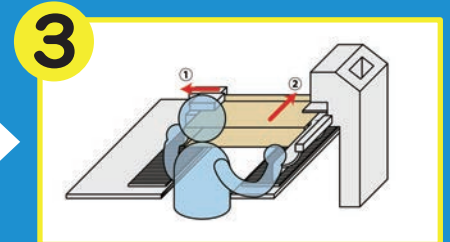
Supply the sheets by hands.



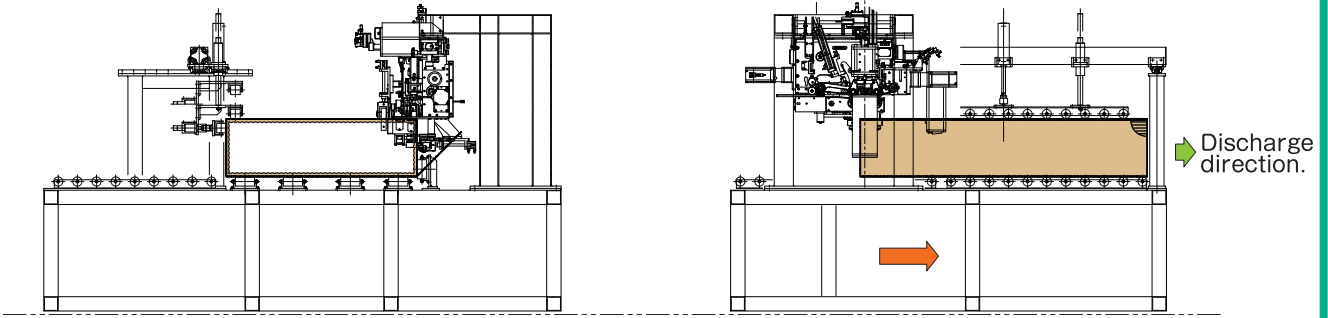
Set while shifting the cardboard.



Fold the sheet to the form of case .Glue flap is hold by supespecial device.

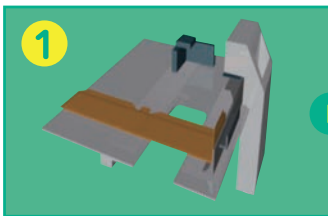


You push cardboard until stopper. After manual correction, suture start by a foot.

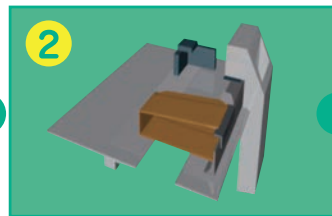


Accepted dimensions of the case

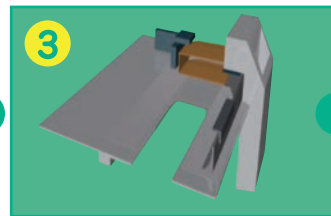
| | |
|---------------------------------------|----------------------------|
| Width of the case | Min 100mm(inside size) |
| Length of the case | Decided after consultation |
| Height of the case | Decided after consultation |
| Machine size is depends on you order. | |



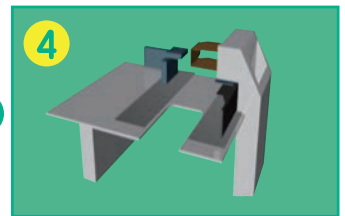
Set while shifting the cardboard



You push cardboard until stopper. Glue flap is hold by special device. After manual correction, suture start by a foot switch



The suture distance manage by a counter.



Automatic thread cutting device works.

■ Mechanical specification

| Eco-stitcher thru-short | |
|-------------------------|------------------------------------------------------------|
| Sewing machine | One way sewing system |
| Sewing method | Straight 2-lines, Single chain stitch |
| The width of the seam | 12mm |
| Sewing pitch | The middle pitch is 15 mm The last pitch is 7.5mm twice |
| Sweing speed | 9M~12M/M |
| Cutting system | Automatic thread cutting device |
| Thread | Specified thread |
| Needle | Specified needle |

- ※Machine size is depends on max sheet.
- ※Dry filter or dryer needs.
- ※It can be manufactured in both vertical or horizontal type.

Eco-stitcher is the machine to create a safe and secure packages products to people who can open the box easily without using a cutter knife, etc., by simply pulling the thread out. We can supply three kinds of Eco-stitcher on demands.

★ Eco Stitcher, a stitching machine of such packages awarded "Nagoya Mayor Prize" in Nagoya Industrial Technology Grand Prix 2013.



★ Eco Stitcher, a stitching machine of such packages awarded "Outstanding performance award" in Aichi Environmental Award 2010.



Inquiries about Eco Stitcher to ECOS CO.,LTD.

TEL : +81-52-665-6721 Mail : info@eco-labo.info
 For information of Eco Stitcher <http://eco-stitcher.info>
 For information of packages stitched by Eco Stitcher <http://eco-labo.info>



The Eco's Co., Ltd. caught the authorization for partnership business as "production, sale business of the suture machine for exclusive use of the corrugated cardboard using an exclusive thread" on February 4, 2013. Morimoto Mfg. Co., Ltd is in charge of sewing machine. Kojima ironworks Co., Ltd is in charge of the design and development of corrugated cardboard transport system. and work evaluation.

Check ! 