

FOR two piece and narrow box style.

Eco-stitcher is the machine to create a safe and secure packages products to people who can open the box easily without using a cutter knife, etc., by simply pulling the thread out.

Eco-stitcher Twin Long

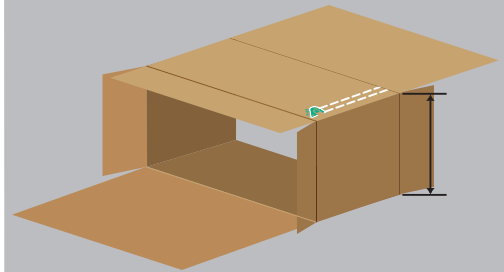
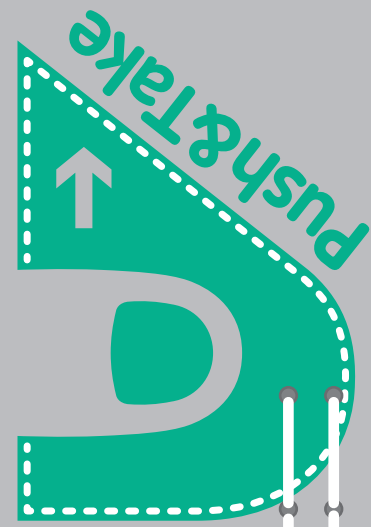
3-less points

- ① NO Rust&Scratch.
- ② NO Para-Adhesion.
- ③ NO Classification processing.
Because the thread is made by pulp.



5 Good-points

- ① Accommodates corrugated boxes 100 mm wide or more.
- ② Stitched cardboard boxes can be unpacked just by pulling out the yarn without use of tools.
- ③ Achieves higher compression strength of stitched boxes as compared to that of wire-seamed boxes.
- ④ Contributes to reducing CO2 emissions. According to the estimation in life cycle assessment, CO2 emissions are reduced by 1.16 g per one shot of metal wire on the corrugated box.
- ⑤ Glue flap needs at least 35mm. Reduction in cost is possible against glue.

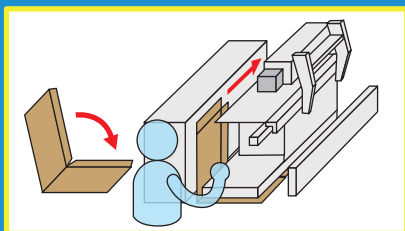


Acceptance case format.

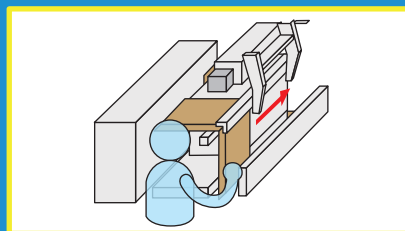
Normal A style.
Heteromorphic A-style.
Semi A style.

The total length of stitches is set on the counter for normal A style and the heteromorphic A-style. The semi A style decides suture distance by the sensor.

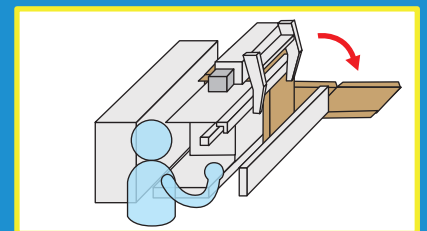
Supply the sheets by hands.



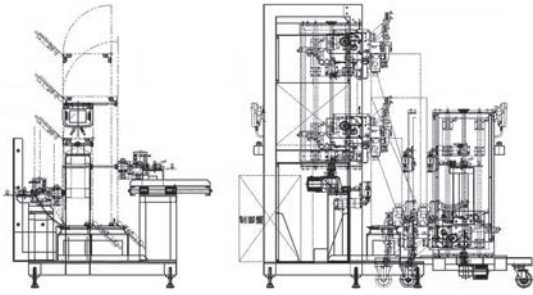
The operator fold corrugated cardboard and sets it from the left. the seat stops automatically to a stopper.



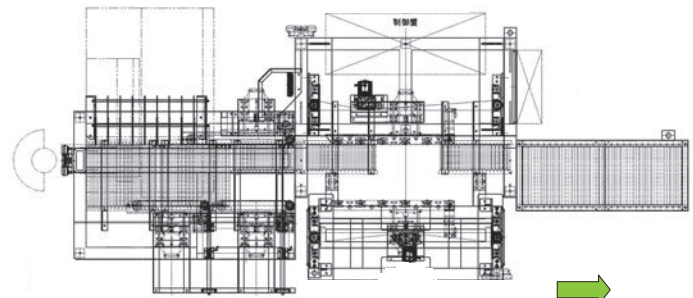
Set by folding a sheet on the left side. Glue flap will be folded automatically in the folding device.



The corrugated box is transferred to the eject side and ejected while being folded in a specified.

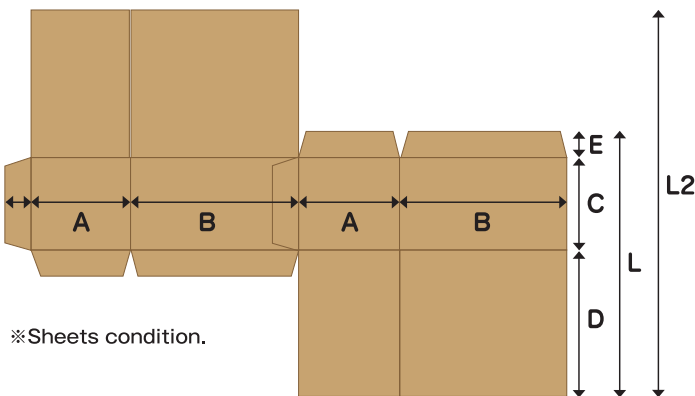


The image of Eco-stitcher twin-long.

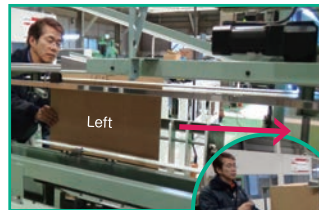


Discharge direction.

Ask us about the size from A to L2



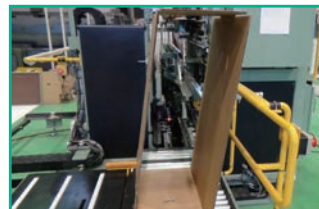
※Sheets condition.



Supplies by folding a sheet alternately with the left and right sides.



Glue flap will be folded automatically in the folding device. It is automatic suture start sheet of both you come to the set position.



The total length of stitches is set on the counter or by the sensor.



Automatic thread cutting device works Automatically, and knock it down to the appointed direction.

■ Mechanical specification

Eco-stitcher twin-long	
Sewing machine	One way sewing system
Sewing method	Straight 2-lines, Single chain stitch
The width of the seam	12mm
Sewing pitch	The middle pitch is 15 mm The last pitch is 7.5mm twice
Sweing speed	9M/M
Cutting system	Automatic thread cutting device
Thread	Specified thread
Needle	Specified needle

- ※Machine size is depends on max sheet.
- ※Dry filter or dryer needs.
- ※It can be manufactured in both vertical or horizontal type.

Eco-stitcher is the machine to create a safe and secure packages products to people who can open the box easily without using a cutter knife, etc., by simply pulling the thread out. We can supply three kinds of Eco-stitcher on demands.

- ★ Eco Stitcher, a stitching machine of such packages awarded "Nagoya Mayor Prize" in Nagoya Industrial Technology Grand Prix 2013.
- ★ Eco Stitcher, a stitching machine of such packages awarded "Outstanding performance award" in Aichi Environmental Award 2010.



Inquiries about Eco Stitcher to ECOS CO.,LTD.

TEL : +81-52-665-6721 Mail : info@eco-labo.info
 For information of Eco Stitcher
<http://eco-stitcher.info>
 For information of packages stitched by Eco Stitcher
<http://eco-labo.info>



The Eco's Co., Ltd. caught the authorization for partnership business as "production, sale business of the suture machine for exclusive use of the corrugated cardboard using an exclusive thread" on February 4, 2013. Morimoto Mfg. Co., Ltd is in charge of sewing machine. Kojima ironworks Co., Ltd is in charge of the design and development of corrugated cardboard transport system. and work evaluation.

Check ! 